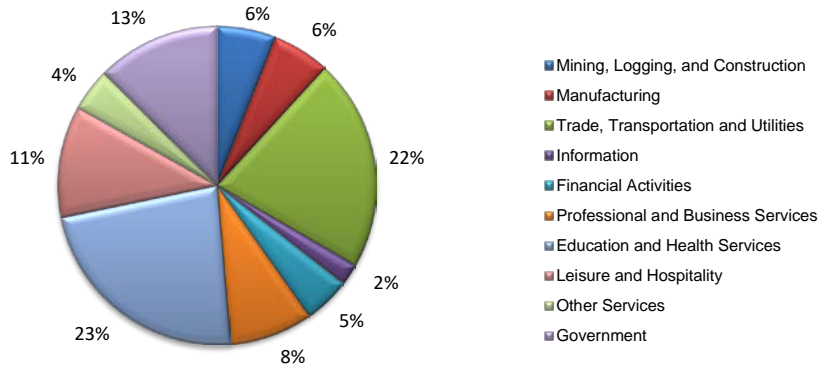
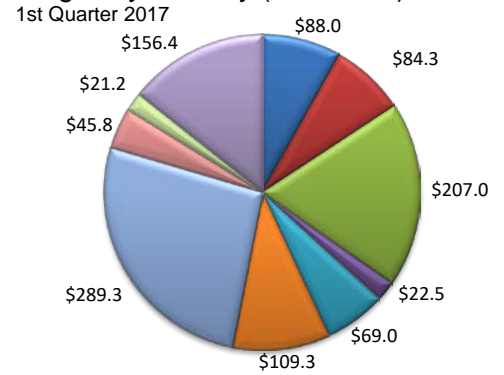


(Smith)

Industry Composition



Wages by Industry (in millions)



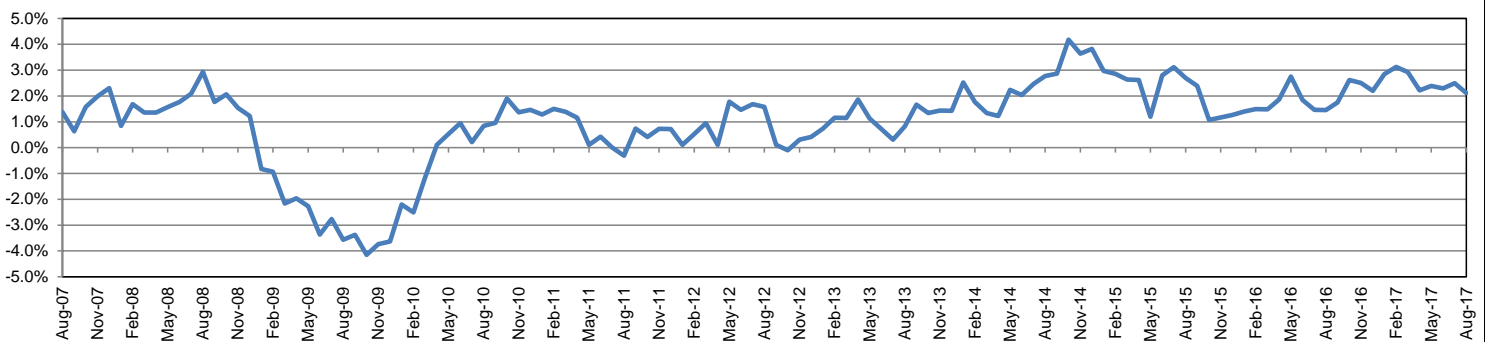
Employment by Industry

				Monthly Change		Annual Change	
	Aug-17	Jul-17	Aug-16	Actual	%	Actual	%
Total Nonfarm	106,600	106,800	104,400	-200	-0.2%	2,200	2.1%
Mining, Logging, and Construction	6,300	6,300	6,000	0	0.0%	300	5.0%
Manufacturing	6,300	6,300	6,400	0	0.0%	-100	-1.6%
Trade, Transportation, and Utilities	22,900	22,700	22,600	200	0.9%	300	1.3%
Information	2,300	2,300	2,200	0	0.0%	100	4.5%
Financial Activities	5,100	5,100	5,200	0	0.0%	-100	-1.9%
Professional and Business Services	9,000	9,100	9,100	-100	-1.1%	-100	-1.1%
Education and Health Services	24,600	24,500	23,400	100	0.4%	1,200	5.1%
Leisure and Hospitality	12,100	12,300	11,400	-200	-1.6%	700	6.1%
Other Services	4,600	4,600	5,000	0	0.0%	-400	-8.0%
Government	13,400	13,600	13,100	-200	-1.5%	300	2.3%

Industry Size Class

January 2017				
Size Class	Employees per firm	Number of Firms	Employment in Size Class	% Total Employment
9	1000+	11	22,772	22.3%
8	500-999	14	9,694	9.5%
7	250-499	14	5,009	4.9%
6	100-249	105	14,696	14.4%
5	50-99	185	12,924	12.7%
4	20-49	528	16,083	15.8%
3	10-19	690	9,474	9.3%
2	5-9	929	6,169	6.1%
1	1-4	2,605	5,082	5.0%
0	0	471	0	0.0%
Total		5,552	101,903	100.0%

Annual Growth Rate for Total Nonagricultural Employment



Unemployment Information (all estimates in thousands)

	Tyler MSA				Texas (Actual)				United States (Actual)			
	C.L.F.	Emp.	Unemp.	Rate	C.L.F.	Emp.	Unemp.	Rate	C.L.F.	Emp.	Unemp.	Rate
Aug-17	106.7	102.4	4.3	4.1	13,406.8	12,802.0	604.8	4.5	160,863.0	153,576.0	7,287.0	4.5
Jul-17	107.3	103.1	4.2	3.9	13,434.6	12,850.6	584.0	4.3	161,911.0	154,470.0	7,441.0	4.6
Aug-16	106.3	101.0	5.3	5.0	13,295.2	12,639.0	656.2	4.9	159,800.0	151,804.0	7,996.0	5.0

Historical Unemployment Rates

